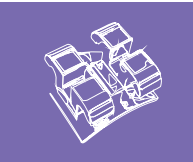


# Ice Crystal Ceramic Bracket Refined Series



- Ceramic Brackets made from polycrystalline alumina ensuring clear and transparent
- Low contour design for maximum patient's comfort
- Mechanical Base design for better bonding strength and convenient for debonding
- Generous tie wing space for easy ligating
- Enhanced base design for easy and safety debonding

# Sapphire Bracket Refined Series



- Lowest friction aesthetic sapphire ceramic bracket
- Superior monocrystalline clear appearance
- Low contour design bring maximum patient comfort

## Identification System

5	4	3	2	1	1	2	3	4	5
●	●	●	●	●	●	●	●	●	●

## Identification System

5	4	3	2	1	1	2	3	4	5
●	●	●	●	●	●	●	●	●	●

# Ceramic Bracket Refined Series



## Roth Prescription



### Maxillary

Tooth	Torque	Angle	In/Out (mm)	M/D (mm)	R/L	.022	.018
Central	+12°	+5°	0.7	3.7	R	BR212-2011	BR211-2011
					L	BR212-2021	BR211-2021
Lateral	+8°	+9°	1.1	3.3	R	BR212-2012	BR211-2012
					L	BR212-2022	BR211-2022
Cuspid Hk	-2°	+8°	0.7	3.4	R	BR212-2113	BR211-2113
					L	BR212-2123	BR211-2123
bicuspid	-7°	0°	0.7	3.6	R	BR212-2014	BR211-2014
					L	BR212-2024	BR211-2024
bicuspid Hk					R	BR212-2114	BR211-2114
					L	BR212-2124	BR211-2124

### Mandibular

Tooth	Torque	Angle	In/Out (mm)	M/D (mm)	R/L	.022	.018
Anterior	-1°	0°	1.1	3.0	R/L	BR212-2031	BR211-2031
Cuspid Hk	-11°	+7°	0.7	3.4	R	BR212-2143	BR211-2143
					L	BR212-2133	BR211-2133
1 <sup>st</sup> bicuspid	-17°	0°	0.7	3.6	R	BR212-2044	BR211-2044
					L	BR212-2034	BR211-2034
1 <sup>st</sup> bicuspid Hk					R	BR212-2144	BR211-2144
					L	BR212-2134	BR211-2134
2 <sup>nd</sup> bicuspid	-22°	0°	0.7	3.6	R	BR212-2045	BR211-2045
					L	BR212-2035	BR211-2035
2 <sup>nd</sup> bicuspid Hk					R	BR212-2145	BR211-2145
					L	BR212-2135	BR211-2135

Full Sets	.022	.018
Upper/Lower 5×5 Hook on 3	BR212-23	BR211-23
Upper/Lower 5×5 Hook on 3,4,5	BR212-25	BR211-25

# Ceramic Bracket Refined Series



## MBT Prescription



### Maxillary

Tooth	Torque	Angle	In/Out (mm)	M/D(mm)	R/L	.022	.018
Central	+17°	+4°	0.7	3.7	R	BR222-2011	BR221-2011
					L	BR222-2021	BR221-2021
Lateral	+10°	+8°	1.1	3.3	R	BR222-2012	BR221-2012
					L	BR222-2022	BR221-2022
Cuspid Hk	0°	+8°	0.7	3.4	R	BR222-2113	BR221-2113
					L	BR222-2123	BR221-2123
bicuspid	-7°	0°	0.7	3.6	R	BR222-2014	BR221-2014
					L	BR222-2024	BR221-2024
bicuspid Hk					R	BR222-2114	BR221-2114
					L	BR222-2124	BR221-2124

### Mandibular

Tooth	Torque	Angle	In/Out (mm)	M/D(mm)	R/L	.022	.018
Anterior	-6°	0°	1.1	3.0	R/L	BR222-2031	BR221-2031
Cuspid Hk	0°	+3°	0.7	3.4	R	BR222-2143	BR221-2143
					L	BR222-2133	BR221-2133
1 <sup>st</sup> bicuspid	-12°	0°	0.7	3.6	R	BR222-2044	BR221-2044
					L	BR222-2034	BR221-2034
1 <sup>st</sup> bicuspid Hk					R	BR222-2144	BR221-2144
					L	BR222-2134	BR221-2134
2 <sup>nd</sup> bicuspid	-17°	0°	0.7	3.6	R	BR222-2045	BR221-2045
					L	BR222-2035	BR221-2035
2 <sup>nd</sup> bicuspid Hk					R	BR222-2145	BR221-2145
					L	BR222-2135	BR221-2135

Full Sets	.022	.018
Upper/Lower 5×5 Hook on 3	BR222-23	BR221-23
Upper/Lower 5×5 Hook on 3,4,5	BR222-25	BR221-25

Sapphire Bracket

\*These are 3B's versions of techniques and do not imply or indicate any endorsement by Drs. McLaughlin, Bennett and Trevisi.

# Sapphire Bracket



## Roth Prescription



### Maxillary

Tooth	Torque	Angle	In/Out (mm)	M/D (mm)	R/L	.022	.018
Central	+12°	+5°	0.7	3.3	R	BR212-3011	BR211-3011
					L	BR212-3021	BR211-2021
Lateral	+8°	+9°	1.1	3.0	R	BR212-3012	BR211-3012
					L	BR212-3022	BR211-3022
Cuspid Hk	-2°	+8°	0.7	3.4	R	BR212-3113	BR211-3113
					L	BR212-3123	BR211-3123
bicuspid	-7°	0°	0.7	3.3	R	BR212-3014	BR211-3014
					L	BR212-3024	BR211-3024
bicuspid Hk					R	BR212-3114	BR211-3114
					L	BR212-3124	BR211-3124

### Mandibular

Tooth	Torque	Angle	In/Out (mm)	M/D (mm)	R/L	.022	.018
Anterior	-1°	0°	1.1	2.9	R/L	BR212-3031	BR211-3031
Cuspid Hk	-11°	+7°	0.7	3.4	R	BR212-3143	BR211-3143
					L	BR212-3133	BR211-3133
1 <sup>st</sup> bicuspid	-17°	0°	0.7	3.3	R	BR212-3044	BR211-3044
					L	BR212-3034	BR211-3033
1 <sup>st</sup> bicuspid Hk					R	BR212-3144	BR211-3144
					L	BR212-3134	BR211-3134
2 <sup>nd</sup> bicuspid	-22°	0°	0.7	3.3	R	BR212-3045	BR211-3045
					L	BR212-3035	BR211-3035
2 <sup>nd</sup> bicuspid Hk					R	BR212-3145	BR211-3145
					L	BR212-3135	BR211-3135

Full Sets	.022	.018
Upper/Lower 5×5 Hook on 3	BR212-33	BR211-33
Upper/Lower 5×5 Hook on 3,4,5	BR212-35	BR211-35

# Sapphire Bracket

## MBT Prescription



### Maxillary

Tooth	Torque	Angle	In/Out (mm)	M/D (mm)	R/L	.022	.018
Central	+17°	+4°	0.7	3.3	R	BR222-3011	BR221-3011
					L	BR222-3021	BR221-3021
Lateral	+10°	+8°	1.1	3.0	R	BR222-3012	BR221-3012
					L	BR222-3022	BR221-3022
Cuspid Hk	0°	+8°	0.7	3.4	R	BR222-3113	BR221-3113
					L	BR222-3123	BR221-3123
bicuspid	-7°	0°	0.7	3.3	R	BR222-3014	BR221-3014
					L	BR222-3024	BR221-3024
bicuspid Hk					R	BR222-3114	BR221-3114
					L	BR222-3124	BR221-3124

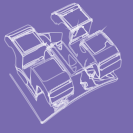
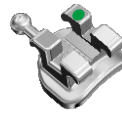
### Mandibular

Tooth	Torque	Angle	In/Out (mm)	M/D (mm)	R/L	.022	.018
Anterior	-6°	0°	1.1	2.9	R/L	BR222-3031	BR221-3031
Cuspid Hk	0°	+3°	0.7	3.4	R	BR222-3143	BR221-3143
					L	BR222-3133	BR221-3133
1 <sup>st</sup> bicuspid	-12°	0°	0.7	3.3	R	BR222-3044	BR221-3044
					L	BR222-3034	BR221-3034
1 <sup>st</sup> bicuspid Hk					R	BR222-3144	BR221-3144
					L	BR222-3134	BR221-3134
2 <sup>nd</sup> bicuspid	-17°	0°	0.7	3.3	R	BR222-3045	BR221-3045
					L	BR222-3035	BR221-3035
2 <sup>nd</sup> bicuspid Hk					R	BR222-3145	BR221-3145
					L	BR222-3135	BR221-3135

Full Sets	.022	.018
Upper/Lower 5×5 Hook on 3	BR222-33	BR221-33
Upper/Lower 5×5 Hook on 3,4,5	BR222-35	BR221-35

# Trumpet Bracket With Mesh Base

## Roth Prescription



### Maxillary

Tooth	Torque	Angle	In/Out (mm)	Std	Mini	R/L	Standard		Miniature	
				M/D(mm)			.022	.018	.022	.018
Central	+12°	+5°	0.7	3.6	3.2	R	BR612-2011	BR611-2011	BR612-1011	BR611-1011
						L	BR612-2021	BR611-2021	BR612-1021	BR611-1021
Lateral	+8°	+9°	1.1	2.8	2.8	R	BR612-2012	BR611-2012	BR612-1012	BR611-1012
						L	BR612-2022	BR611-2022	BR612-1022	BR611-1022
Cuspid	-2°	+11°	0.7	3.0	2.8	R	BR612-2013	BR611-2013	BR612-1013	BR611-1013
						L	BR612-2023	BR611-2023	BR612-1023	BR611-1023
Cuspid Hk						R	BR612-2113	BR611-2113	BR612-1113	BR611-1113
						L	BR612-2123	BR611-2123	BR612-1123	BR611-1123
bicuspid	-7°	0°	0.7	3.0	2.8	R	BR612-2014	BR611-2014	BR612-1014	BR611-1014
						L	BR612-2024	BR611-2024	BR612-1024	BR611-1024
bicuspid Hk						R	BR612-2114	BR611-2114	BR612-1114	BR611-1114
						L	BR612-2124	BR611-2124	BR612-1124	BR611-1124

### Mandibular

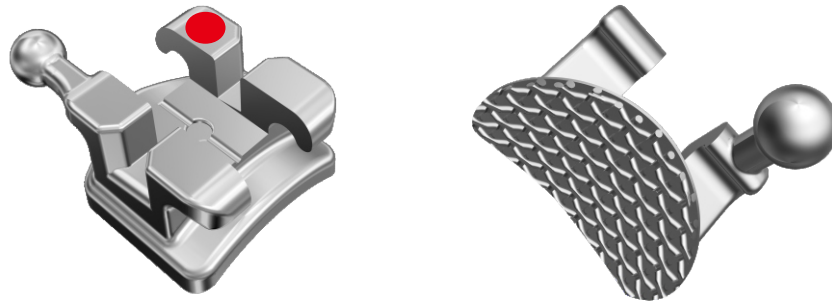
Tooth	Torque	Angle	In/Out (mm)	Std	Mini	R/L	Standard		Miniature	
				M/D(mm)			.022	.018	.022	.018
Anterior	-1°	0°	1.1	2.6	2.3	R	BR612-2041	BR611-2041	BR612-1041	BR611-1041
						L	BR612-2031	BR611-2031	BR612-1031	BR611-1031
Cuspid	-11°	+5°	0.7	3.0	2.8	R	BR612-2043	BR611-2043	BR612-1043	BR611-1043
						L	BR612-2033	BR611-2033	BR612-1033	BR611-1033
Cuspid Hk						R	BR612-2143	BR611-2143	BR612-1143	BR611-1143
						L	BR612-2133	BR611-2133	BR612-1133	BR611-1133
1 <sup>st</sup> bicuspid	-17°	0°	0.6	3.0	2.8	R	BR612-2044	BR611-2044	BR612-1044	BR611-1044
						L	BR612-2034	BR611-2034	BR612-1034	BR611-1034
1 <sup>st</sup> bicuspid Hk						R	BR612-2144	BR611-2144	BR612-1144	BR611-1144
						L	BR612-2134	BR611-2134	BR612-1134	BR611-1134
2 <sup>nd</sup> bicuspid	-22°	0°	0.6	3.0	2.8	R	BR612-2045	BR611-2045	BR612-1045	BR611-1045
						L	BR612-2035	BR611-2035	BR612-1035	BR611-1035
2 <sup>nd</sup> bicuspid Hk						R	BR612-2145	BR611-2145	BR612-1145	BR611-1145
						L	BR612-2135	BR611-2135	BR612-1135	BR611-1135

Full Sets	Std .022	Std .018	Mini .022	Mini .018
Upper/Lower 5×5 No Hook	BR612-20	BR611-20	BR612-10	BR611-10
Upper/Lower 5×5 Hook on 3	BR612-23	BR611-23	BR612-13	BR611-13
Upper/Lower 5×5 Hook on 3,4,5	BR612-23	BR611-23	BR612-15	BR611-15
Upper/Lower 5×5 THook on 3,4,5			BR612-15T	BR611-15T

Trumpet Bracket



## Trumpet Slot Bracket Surpass Series



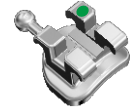
- Low contour design, smooth surface, unique outlook make patient more comfortable
- MIM technique and strict production process control ensure the accuracy of 3D data
- Trumpet design at both mesial and distal end provide more interbracket distance and reduce wire's friction



# Trumpet Bracket With Mesh Base



## MBT Prescription



### Maxillary

Tooth	Torque	Angle	In/Out (mm)	Std	Mini	R/L	Standard		Miniature	
				M/D(mm)			.022	.018	.022	.018
Central	+17°	+4°	0.7	3.6	3.1	R	BR622-2011	BR621-2011	BR622-1011	BR621-1011
						L	BR622-2021	BR621-2021	BR622-1021	BR621-1021
Lateral	+10°	+8°	1.1	2.8	2.8	R	BR622-2012	BR621-2012	BR622-1012	BR621-1012
						L	BR622-2022	BR621-2022	BR622-1022	BR621-1022
Cuspid	-7°	+8°	0.7	3.0	2.9	R	BR622-2013	BR621-2013	BR622-1013	BR621-1013
						L	BR622-2023	BR621-2023	BR622-1023	BR621-1023
Cuspid Hk						R	BR622-2113	BR621-2113	BR622-1113	BR621-1113
						L	BR622-2123	BR621-2123	BR622-1123	BR621-1123
bicuspid	-7°	0°	0.7	3.0	2.8	R	BR622-2014	BR621-2014	BR622-1014	BR621-1014
						L	BR622-2024	BR621-2024	BR622-1024	BR621-1024
bicuspid Hk						R	BR622-2114	BR621-2114	BR622-1114	BR621-1114
						L	BR622-2124	BR621-2124	BR622-1124	BR621-1124

### Mandibular

Tooth	Torque	Angle	In/Out (mm)	Std	Mini	R/L	Standard		Miniature	
				M/D(mm)			.022	.018	.022	.018
Anterior	-6°	0°	1.1	2.6	2.3	R	BR622-2041	BR621-2041	BR622-1041	BR621-1041
						L	BR622-2031	BR621-2031	BR622-1031	BR621-1031
Cuspid	-6°	+3°	0.7	3.0	2.9	R	BR622-2043	BR621-2043	BR622-1043	BR621-1043
						L	BR622-2033	BR621-2033	BR622-1033	BR621-1033
Cuspid Hk						R	BR622-2143	BR621-2143	BR622-1143	BR621-1143
						L	BR622-2133	BR621-2133	BR622-1133	BR621-1133
1 <sup>st</sup> bicuspid	-12°	0°	0.7	3.0	2.8	R	BR622-2044	BR621-2044	BR622-1044	BR621-1044
						L	BR622-2034	BR621-2034	BR622-1034	BR621-1034
1 <sup>st</sup> bicuspid Hk						R	BR622-2144	BR621-2144	BR622-1144	BR621-1144
						L	BR622-2134	BR621-2134	BR622-1134	BR621-1134
2 <sup>nd</sup> bicuspid	-17°	0°	0.7	3.0	2.8	R	BR622-2045	BR621-2045	BR622-1045	BR621-1045
						L	BR622-2035	BR621-2035	BR622-1035	BR621-1035
2 <sup>nd</sup> bicuspid Hk						R	BR622-2145	BR621-2145	BR622-1145	BR621-1145
						L	BR622-2135	BR621-2135	BR622-1135	BR621-1135

Full Sets	Std .022	Std .018	Mini .022	Mini .018
Upper/Lower 5×5 No Hook	BR622-20	BR621-20	BR622-10	BR621-10
Upper/Lower 5×5 Hook on 3	BR622-23	BR621-23	BR622-13	BR621-13
Upper/Lower 5×5 Hook on 3,4,5	BR622-23	BR621-23	BR622-15	BR621-15
Upper/Lower 5×5 THook on 3,4,5			BR622-15T	BR621-15T



# Trumpet Bracket With Mesh Base



## Edgewise Prescription



Maxillary & Mandibular				Std	Mini		Standard		Miniature	
Tooth	Torque	Angle	In/Out (mm)	M/D(mm)	R/L		.022	.018	.022	.018
Central	0°	0°	0.7	3.2	2.8	R/L	BR632-2011	BR631-2011	BR632-1011	BR631-1011
Lateral	0°	0°	0.7	3.0	2.6	R/L	BR632-2012	BR631-2012	BR632-1012	BR631-1012
Cuspid	0°	0°	0.7	3.2	2.8	R/L	BR632-2013	BR631-2013	BR632-1013	BR631-1013
Cuspid Hk						UR/LL	BR632-2113	BR631-2113	BR632-1113	BR631-1113
						UL/LR	BR632-2123	BR631-2123	BR632-1123	BR631-1123
bicuspid	0°	0°	0.7	3.0	2.6	R/L	BR632-2014	BR631-2014	BR632-1014	BR631-1014
bicuspid Hk						UR/LR	BR632-2114	BR631-2114	BR632-1114	BR631-1114
						UL/LL	BR632-2124	BR631-2124	BR632-1124	BR631-1124
Anterior	0°	0°	0.7	2.5	2.3	R/L	BR632-2031	BR631-2031	BR632-1031	BR631-1031

Full Sets	Std .022	Std .018	Mini .022	Mini .018
Upper/Lower 5×5 No Hook	BR632-20	BR631-20	BR632-10	BR631-10
Upper/Lower 5×5 Hook on 3	BR632-23	BR631-23	BR632-13	BR631-13
Upper/Lower 5×5 Hook on 3,4,5	BR632-25	BR631-25	BR632-15	BR631-15



Trumpet Bracket

# Trumpet Bracket Monoblock

## Roth Prescription



### Maxillary

Tooth	Torque	Angle	In/Out (mm)	Std	Mini	R/L	Standard		Miniature	
				M/D(mm)			.022	.018	.022	.018
Central	+12°	+5°	0.7	3.4	3.0	R	BR712-2011	BR711-2011	BR712-1011	BR711-1011
						L	BR712-2021	BR711-2021	BR712-1021	BR711-1021
Lateral	+8°	+9°	1.1	2.8	2.6	R	BR712-2012	BR711-2012	BR712-1012	BR711-1012
						L	BR712-2022	BR711-2022	BR712-1022	BR711-1022
Cuspid	-2°	+11°	0.7	3.0	2.8	R	BR712-2013	BR711-2013	BR712-1013	BR711-1013
						L	BR712-2023	BR711-2023	BR712-1023	BR711-1023
Cuspid Hk						R	BR712-2113	BR711-2113	BR712-1113	BR711-1113
						L	BR712-2123	BR711-2123	BR712-1123	BR711-1123
bicuspid	-7°	0°	0.7	3.0	2.8	R	BR712-2014	BR711-2014	BR712-1014	BR711-1014
						L	BR712-2024	BR711-2024	BR712-1024	BR711-1024
bicuspid Hk						R	BR712-2114	BR711-2114	BR712-1114	BR711-1114
						L	BR712-2124	BR711-2124	BR712-1124	BR711-1124

### Mandibular

Tooth	Torque	Angle	In/Out (mm)	Std	Mini	R/L	Standard		Miniature	
				M/D(mm)			.022	.018	.022	.018
Anterior	-1°	0°	1.1	2.3	2.3	R/L	BR712-2031	BR711-2031	BR712-1031	BR711-1031
Cuspid	-11°	+5°	0.7	3.0	2.8	R	BR712-2043	BR711-2043	BR712-1043	BR711-1043
						L	BR712-2033	BR711-2033	BR712-1033	BR711-1033
Cuspid Hk						R	BR712-2143	BR711-2143	BR712-1143	BR711-1143
						L	BR712-2133	BR711-2133	BR712-1133	BR711-1133
1 <sup>st</sup> bicuspid	-17°	0°	0.6	3.0	2.8	R	BR712-2044	BR711-2044	BR712-1044	BR711-1044
						L	BR712-2034	BR711-2034	BR712-1034	BR711-1034
1 <sup>st</sup> bicuspid Hk						R	BR712-2144	BR711-2144	BR712-1144	BR711-1144
						L	BR712-2134	BR711-2134	BR712-1134	BR711-1134
2 <sup>nd</sup> bicuspid	-22°	0°	0.6	3.0	2.8	R	BR712-2045	BR711-2045	BR712-1045	BR711-1045
						L	BR712-2035	BR711-2035	BR712-1035	BR711-1035
2 <sup>nd</sup> bicuspid Hk						R	BR712-2145	BR711-2145	BR712-1145	BR711-1145
						L	BR712-2135	BR711-2135	BR712-1135	BR711-1135

#### Full Sets

Full Sets	Std .022	Std .018	Mini .022	Mini .018
Upper/Lower 5×5 No Hook	BR712-20	BR711-20	BR712-10	BR711-10
Upper/Lower 5×5 Hook on 3	BR712-23	BR711-23	BR712-13	BR711-13
Upper/Lower 5×5 Hook on 3,4,5	BR712-25	BR711-25	BR712-15	BR711-15

# Trumpet Bracket Monoblock

## MBT Prescription



### Maxillary

Tooth	Torque	Angle	In/Out (mm)	Std	Mini	R/L	Standard		Miniature	
				M/D(mm)			.022	.018	.022	.018
Central	+17°	+4°	0.7	3.4	3.0	R	BR722-2011	BR721-2011	BR722-1011	BR721-1011
						L	BR722-2021	BR721-2021	BR722-1021	BR721-1021
Lateral	+10°	+8°	1.1	2.8	2.6	R	BR722-2012	BR721-2012	BR722-1012	BR721-1012
						L	BR722-2022	BR721-2022	BR722-1022	BR721-1022
Cuspid	-7°	+8°	0.7	3.0	2.8	R	BR722-2013	BR721-2013	BR722-1013	BR721-1013
						L	BR722-2023	BR721-2023	BR722-1023	BR721-1023
Cuspid Hk						R	BR722-2113	BR721-2113	BR722-1113	BR721-1113
						L	BR722-2123	BR721-2123	BR722-1123	BR721-1123
bicuspid	-7°	0°	0.7	3.0	2.8	R	BR722-2014	BR721-2014	BR722-1014	BR721-1014
						L	BR722-2024	BR721-2024	BR722-1024	BR721-1024
bicuspid Hk						R	BR722-2114	BR721-2114	BR722-1114	BR721-1114
						L	BR722-2124	BR721-2124	BR722-1124	BR721-1124

### Mandibular

Tooth	Torque	Angle	In/Out (mm)	Std	Mini	R/L	Standard		Miniature	
				M/D(mm)			.022	.018	.022	.018
Anterior	-6°	0°	1.1	2.3	2.3	R/L	BR722-2031	BR721-2031	BR722-1031	BR721-1031
Cuspid	-6°	+3°	0.7	3.0	2.8	R	BR722-2043	BR721-2043	BR722-1043	BR721-1043
						L	BR722-2033	BR721-2033	BR722-1033	BR721-1033
Cuspid Hk						R	BR722-2143	BR721-2143	BR722-1143	BR721-1143
						L	BR722-2133	BR721-2133	BR722-1133	BR721-1133
1 <sup>st</sup> bicuspid	-12°	0°	0.7	3.0	2.8	R	BR722-2044	BR721-2044	BR722-1044	BR721-1044
						L	BR722-2034	BR721-2034	BR722-1034	BR721-1034
1 <sup>st</sup> bicuspid Hk						R	BR722-2144	BR721-2144	BR722-1144	BR721-1144
						L	BR722-2134	BR721-2134	BR722-1134	BR721-1134
2 <sup>nd</sup> bicuspid	-17°	0°	0.7	3.0	2.8	R	BR722-2045	BR721-2045	BR722-1045	BR721-1045
						L	BR722-2035	BR721-2035	BR722-1035	BR721-1035
2 <sup>nd</sup> bicuspid Hk						R	BR722-2145	BR721-2145	BR722-1145	BR721-1145
						L	BR722-2135	BR721-2135	BR722-1135	BR721-1135

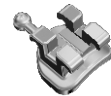
Full Sets	Std .022	Std .018	Mini .022	Mini .018
Upper/Lower 5×5 No Hook	BR722-20	BR721-20	BR722-10	BR721-10
Upper/Lower 5×5 Hook on 3	BR722-23	BR721-23	BR722-13	BR721-13
Upper/Lower 5×5 Hook on 3,4,5	BR722-25	BR721-25	BR722-15	BR721-15

MIM Monoblock Bracket

\*These are 3B's versions of techniques and do not imply or indicate any endorsement by Drs. McLaughlin, Bennett and Trevisi.

# Trumpet Bracket Monoblock

## Edgewise Prescription



### Maxillary & Mandibular

Tooth	Torque	Angle	In/Out (mm)	Std		R/L	Standard		Miniature	
				M/D(mm)	Mini		.022	.018	.022	.018
Central	0°	0°	0.7	3.2	2.8	R/L	BR732-2011	BR731-2011	BR732-1011	BR731-1011
Lateral	0°	0°	0.7	3.0	2.6	R/L	BR732-2012	BR731-2012	BR732-1012	BR731-1012
Cuspid	0°	0°	0.7	3.2	2.8	R/L	BR732-2013	BR731-2013	BR732-1013	BR731-1013
Cuspid Hk						UR/LL	BR732-2113	BR731-2113	BR732-1113	BR731-1113
						UL/LR	BR732-2123	BR731-2123	BR732-1123	BR731-1123
bicuspid	0°	0°	0.7	3.0	2.6	R/L	BR732-2014	BR731-2014	BR732-1014	BR731-1014
bicuspid Hk						UR/LR	BR732-2114	BR731-2114	BR732-1114	BR731-1114
						UL/LL	BR732-2124	BR731-2124	BR732-1124	BR731-1124
Anterior	0°	0°	0.7	2.5	2.3	R/L	BR732-2031	BR731-2031	BR732-1031	BR731-1031

Full Sets	Std .022	Std .018	Mini .022	Mini .018
Upper/Lower 5×5 No Hook	BR732-20	BR731-20	BR732-10	BR731-10
Upper/Lower 5×5 Hook on 3	BR732-23	BR731-23	BR732-13	BR731-13
Upper/Lower 5×5 Hook on 3,4,5	BR732-25	BR731-25	BR732-15	BR731-15

MIM Monoblock Bracket

